

**PRICE SHEET FOR SPORT-SPECIFIC
3-D BIOMECHANICAL MOTION ANALYSIS**

HITTING | Baseball/Softball

INTRO: 15 minutes/\$40.00 1-sensor & zelocity

Includes 3-D viewer CD showing: Bat Swing Speed and Bat Path, and Power Transfer Ratio

BASIC: 30 minutes/\$95.00 4-sensor

Biomechanical swing analysis and report, plus everything above

ADVANCED: 60 minutes/\$175.00

Ground Force Production and Weight Shift Testing on Dynamic Balance Force Plate System, plus everything above

THROWING | Baseball/Softball Pitching, QB Passing

ADVANCED: 60 minutes/\$175.00 8-sensor

Includes 3-D viewer CD of analysis, plus Throwing Velocity test, using radar gun

GOLF

BASIC: 30 minutes/\$95.00 4-sensor

Includes 3-D viewer CD and report: Kinematic Sequence, X-Factor, X-Factor Stretch, Postures, Club Dynamics and Speeds

ADVANCED: 60 minutes/\$175.00

Balance, Weight shift, and Tempo testing on Dynamic Balance Force Plate System, plus everything above

GENERAL ATHLETICS | Jumping, Squatting

BASIC: 30 minutes/\$95.00 8-sensor

Includes 3-D viewer CD and report: Integrated full body mobility, muscular imbalances, and range-of-motion

ADVANCED: 60 minutes/\$175.00

Ground Force Production and Weight Shift testing on Dynamic Balance Force Plate System, plus everything above

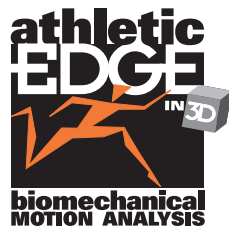
OTHER SPORTS | Serving Tennis, Cycling,

Lacrosse Shooting, Vertical Jumping, Track & Field, Hockey, Soccer Kicking, Football Punting

ANALYSIS: 30 minutes/\$150.00 Hand-digitized

Includes 3-D biomechanical graphs and report. Test is non-real time and takes approximately three days for results.

Group and team rates also available. Call for specific information



**ATHLETIC EDGE IN 3D
Biomechanical Motion
Analysis**

1718 East Second Street
Scotch Plains
New Jersey 07076

908.322.2003

www.athleticedge.net

**PRICE SHEET FOR SPORT-SPECIFIC
3-D BIOMECHANICAL MOTION ANALYSIS**

HITTING | Baseball/Softball

INTRO: 15 minutes/\$40.00 1-sensor & zelocity

Includes 3-D viewer CD showing: Bat Swing Speed and Bat Path, and Power Transfer Ratio

BASIC: 30 minutes/\$95.00 4-sensor

Biomechanical swing analysis and report, plus everything above

ADVANCED: 60 minutes/\$175.00

Ground Force Production and Weight Shift Testing on Dynamic Balance Force Plate System, plus everything above

THROWING | Baseball/Softball Pitching, QB Passing

ADVANCED: 60 minutes/\$175.00 8-sensor

Includes 3-D viewer CD of analysis, plus Throwing Velocity test, using radar gun

GOLF

BASIC: 30 minutes/\$95.00 4-sensor

Includes 3-D viewer CD and report: Kinematic Sequence, X-Factor, X-Factor Stretch, Postures, Club Dynamics and Speeds

ADVANCED: 60 minutes/\$175.00

Balance, Weight shift, and Tempo testing on Dynamic Balance Force Plate System, plus everything above

GENERAL ATHLETICS | Jumping, Squatting

BASIC: 30 minutes/\$95.00 8-sensor

Includes 3-D viewer CD and report: Integrated full body mobility, muscular imbalances, and range-of-motion

ADVANCED: 60 minutes/\$175.00

Ground Force Production and Weight Shift testing on Dynamic Balance Force Plate System, plus everything above

OTHER SPORTS | Serving Tennis, Cycling,

Lacrosse Shooting, Vertical Jumping, Track & Field, Hockey, Soccer Kicking, Football Punting

ANALYSIS: 30 minutes/\$150.00 Hand-digitized

Includes 3-D biomechanical graphs and report. Test is non-real time and takes approximately three days for results.

Group and team rates also available. Call for specific information



**ATHLETIC EDGE IN 3D
Biomechanical Motion
Analysis**

1718 East Second Street
Scotch Plains
New Jersey 07076

908.322.2003

www.athleticedge.net

**PRICE SHEET FOR SPORT-SPECIFIC
3-D BIOMECHANICAL MOTION ANALYSIS**

HITTING | Baseball/Softball

INTRO: 15 minutes/\$40.00 1-sensor & zelocity

Includes 3-D viewer CD showing: Bat Swing Speed and Bat Path, and Power Transfer Ratio

BASIC: 30 minutes/\$95.00 4-sensor

Biomechanical swing analysis and report, plus everything above

ADVANCED: 60 minutes/\$175.00

Ground Force Production and Weight Shift Testing on Dynamic Balance Force Plate System, plus everything above

THROWING | Baseball/Softball Pitching, QB Passing

ADVANCED: 60 minutes/\$175.00 8-sensor

Includes 3-D viewer CD of analysis, plus Throwing Velocity test, using radar gun

GOLF

BASIC: 30 minutes/\$95.00 4-sensor

Includes 3-D viewer CD and report: Kinematic Sequence, X-Factor, X-Factor Stretch, Postures, Club Dynamics and Speeds

ADVANCED: 60 minutes/\$175.00

Balance, Weight shift, and Tempo testing on Dynamic Balance Force Plate System, plus everything above

GENERAL ATHLETICS | Jumping, Squatting

BASIC: 30 minutes/\$95.00 8-sensor

Includes 3-D viewer CD and report: Integrated full body mobility, muscular imbalances, and range-of-motion

ADVANCED: 60 minutes/\$175.00

Ground Force Production and Weight Shift testing on Dynamic Balance Force Plate System, plus everything above

OTHER SPORTS | Serving Tennis, Cycling,

Lacrosse Shooting, Vertical Jumping, Track & Field, Hockey, Soccer Kicking, Football Punting

ANALYSIS: 30 minutes/\$150.00 Hand-digitized

Includes 3-D biomechanical graphs and report. Test is non-real time and takes approximately three days for results.

Group and team rates also available. Call for specific information



**ATHLETIC EDGE IN 3D
Biomechanical Motion
Analysis**

1718 East Second Street
Scotch Plains
New Jersey 07076

908.322.2003

www.athleticedge.net